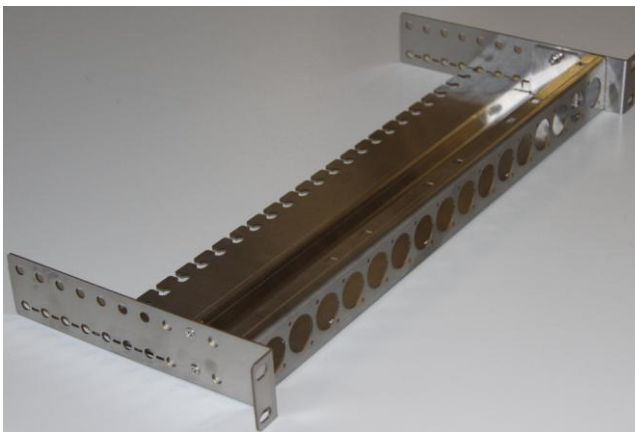




Part. No: BC-13-020

Date 13/4-2011

Bergen Cabling Heavy Duty Stainless steel Maritime LAN Patchpanel for 16 XLR adapters



Front/Side



Front showing adapters (not included)

16 port Patchpanel for XLR adapter

19" Patchpanel 1 HU of solid stainless steel.

Front adjustable from flush to 7 cm rear.

Heavy duty solution for maritime and offshore installations with good distance from fastening the cable to the connector.

Dimensions

Height: 4.5 cm Diameter \varnothing : 2.4 cm
Width: 44.6 cm
Depth: 20.0 cm

Included

Grounding facilities included as well as labeling solution with plastic cover.

Ordering info

Part No.	Part Name
BC-13-020	Bergen Cabling Maritime XLR patchpanel 16p
VD01602	Connector XLR Neutrik chassis Female black
VD01605	Connector XLR Neutrik chassis Male black

Bergen Cabling Maritime LAN Concept by SOhome as
Sandviksbodene 77c – N 5035 Bergen
Tel: +47 55 31 27 00 Fax: +47 55 31 27 01
e-mail: post@sohome.no