



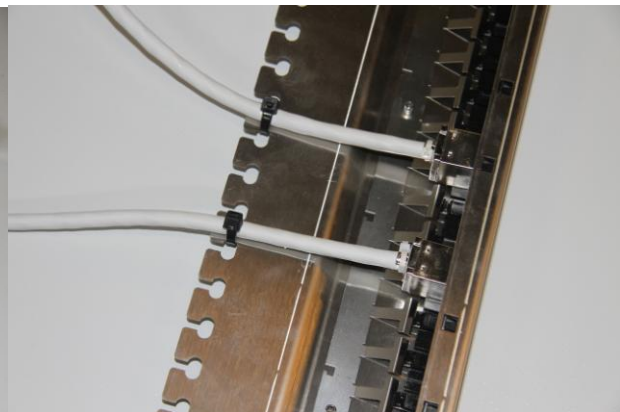
Part. No: BC-13-001

Date 13/4-2011

Bergen Cabling Heavy Duty Stainless steel Maritime LAN Patchpanel for 24 Snap in Cat.6A RJ45 connectors



Front



Top

24 port Patchpanel for 10 Gigabit Cat.6A connector

19" Patchpanel 1 HU of solid stainless steel.

Front adjustable from flush to 7 cm rear.

Heavy duty solution for maritime and offshore installations with good distance from fastening the cable to the snap in connector.

Dimensions

Height: 4,5 cm
Width: 44,6 cm
Depth: 20,0 cm

Included

Grounding facilities included as well as labeling solution with plastic cover.

The panel is also prepared for hybrid solution with every second port as fiber optic LC adaptor.

Ordering info

Part No.	Part Name
BC-13-001	Bergen Cabling Maritime LAN patchpanel 24p
BC-13-002	Bergen Cabling Maritime LAN PP 24p w/Cat6A connectors

Bergen Cabling Maritime LAN Concept by SOhome as
Sandviksbodene 77c – N 5035 Bergen
Tel: +47 55 31 27 00 Fax: +47 55 31 27 01
e-mail: post@sohome.no